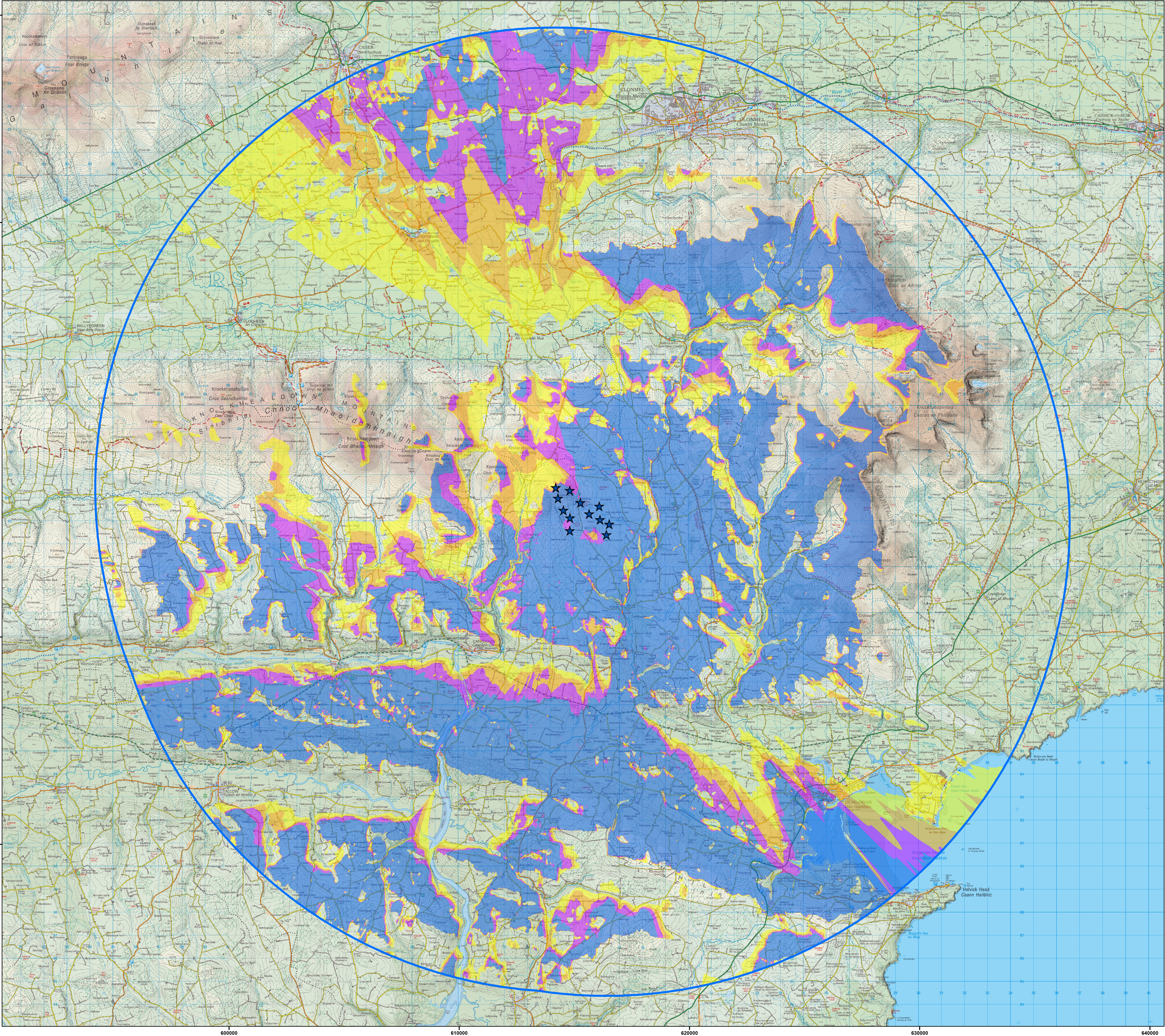


Figure 11.9: ZTV (Zone of Theoretical Visibility) indicating the areas that have a potential view of the proposed turbines at Dyrick Hill Wind Farm (Tip Height 185m)



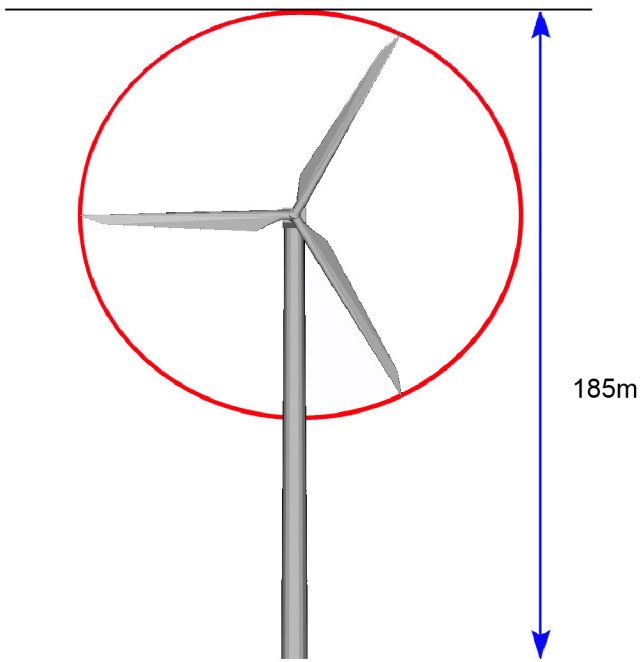
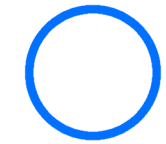
Proposed Turbines



No. Turbines Visible

- 1 - 3
- 4 - 6
- 7 - 9
- 10 - 12

20km Extent



This ZTV map has been calculated such that a turbine registers as been theoretically visible to observers in the surrounding landscape once there is an unobstructed line of sight to its blade tip.

Observer Height assumed: 2m to eye-level height
Blade Tip Heights: 185m

Note: This ZTV map is calculated for landform screening only and does not take account of the significant screening effects of vegetation (hedgerows, trees) and buildings inherent across the study area.